

# UNEXPLAINED PROGRESSIVE VISION LOSS AFTER SUCCESSFUL RETINAL DETACHMENT REPAIR

*SUSANNA S. PARK, MD PHD*

*PROFESSOR OF OPHTHALMOLOGY*

*UNIVERSITY OF CALIFORNIA DAVIS EYE CENTER*



# FINANCIAL DISCLOSURE

- Allergan: contracted research via employer
- Roche/Novartis: contracted research via employer

# SUMMARY

- A case of unexplained progressive vision loss and central scotoma after successful repair of macula-on retinal detachment using scleral buckle, PPV and oil

# CASE PRESENTATION

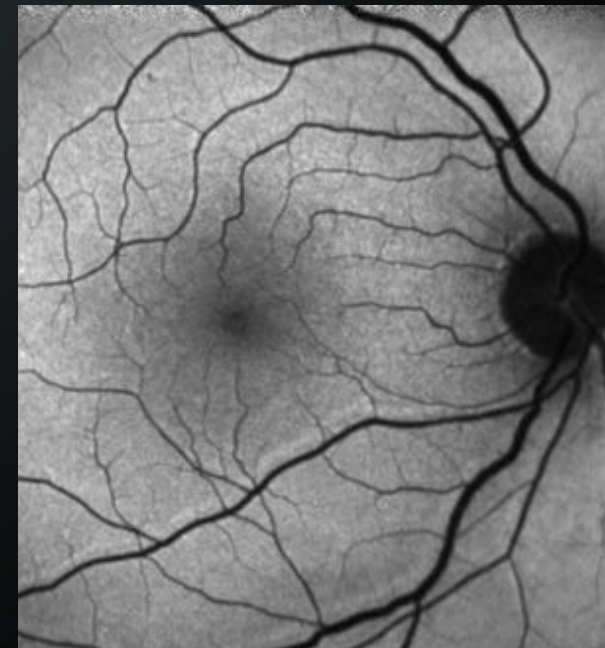
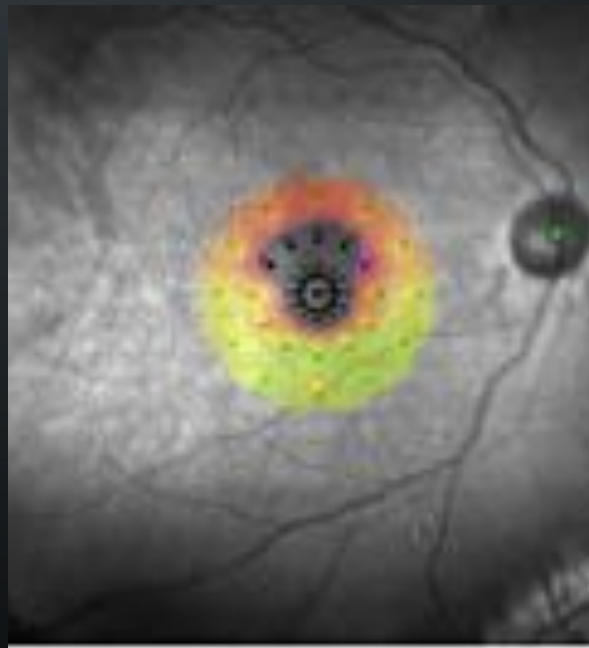
- 51-year-old man presented for urgent evaluation for new flashes & floaters and shadow OD x 1 day
- Past Ocular History:
  - s/p CE/IOL OD: possible traumatic cataract
  - Retinal tear OD s/p laser 2 months earlier
  - Macula-on RD OD s/p PPV, EL, SF6 1 month earlier
- Exam: BCVA 20/20 OD
- Fundus Exam: Nasal laser scars with RD extending inferiorly sparing macula

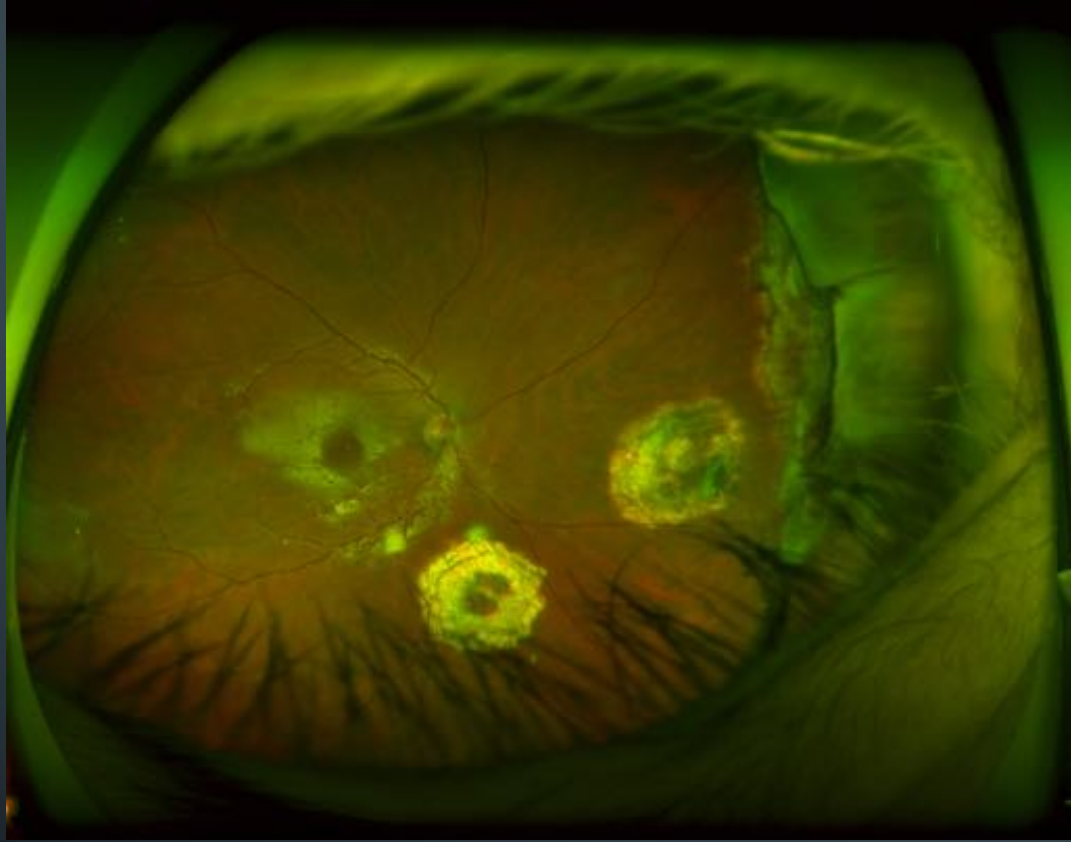
# URGENT SURGERY: SB, PPV, EL, OIL OD

- New Retinal breaks noted nasally and inferiorly
- Silicone oil tamponade requested by patient given his active lifestyle
  - Martial artist
- 6 weeks postop: VA 20/50 pinhole 20/40
  - Attached retina under oil
- 3 months postop: noted new dark spot in central vision after restarting martial arts
  - VA 20/150 pinhole 20/100; retina attached; unremarkable OCT
- 6 months postop: increased dark central spot
  - VA CF at 2 ft; retina attached

3 months postop: 20/150

6 months postop: CF





# INCIDENCE, RISK FACTORS, AND CLINICAL CHARACTERISTICS OF UNEXPLAINED VISUAL LOSS AFTER INTRAOCULAR SILICONE OIL FOR MACULA-ON RETINAL DETACHMENT (SCHEERLINK ET AL. RETINA, 2016)

- Retrospective study: unexplained vision loss 2 months after PPV
- Incidence: 29.7% after oil vs 0.7% with gas
- Vision loss after PPV, 2000csi Silicone Oil or Oil removal
  - Mean BCVA 20/200 (Range: 20/63 to 2/200)
- Microperimetry: Small Central Scotoma; mfERG: abnormal
- OCT: unremarkable except for macular ganglion cell layer thinning

THANK YOU!!

