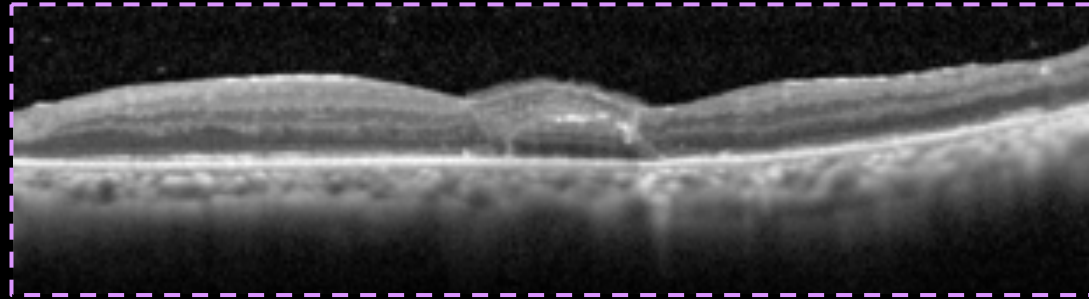


Autologous Retinal Transplant in a Macular Hole-Associated Total Rhegmatogenous Retinal Detachment



Christina Y. Weng, MD, MBA

Associate Professor of Ophthalmology

Fellowship Program Director, Vitreoretinal Diseases & Surgery

Baylor College of Medicine, Houston, TX

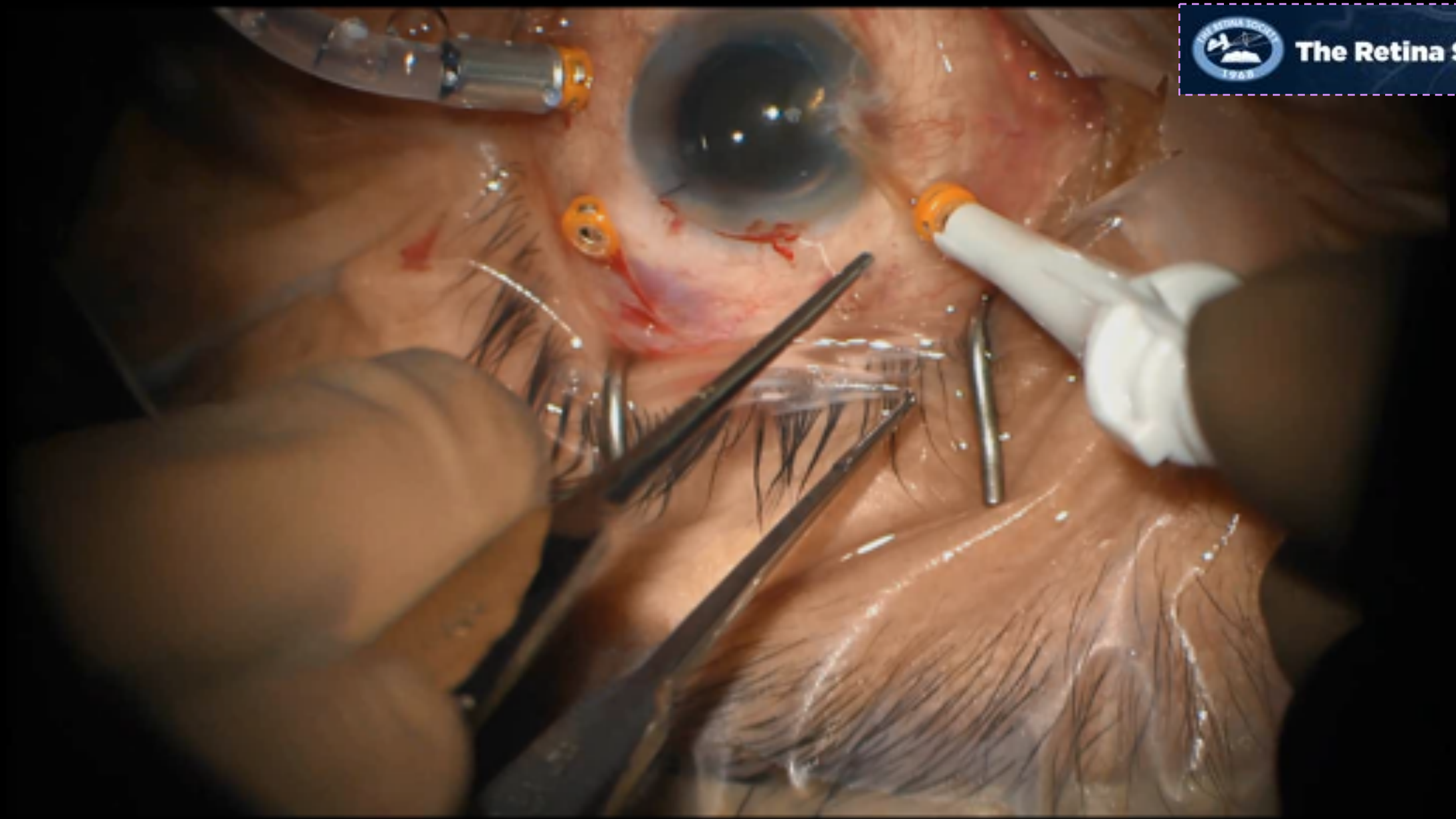
Retina Society RS2020VR Annual Meeting

Disclosures

- Allergan/AbbVie, Inc. (C)
- Alimera Sciences, Inc. (C)
- Alcon, Inc. (C)
- DORC (C)
- Novartis, Inc. (C)
- Regeneron Pharmaceuticals, Inc. (C)

Summary

- 67 y/o healthy pseudophakic male with chronic bullous total retinal detachment obscuring view of the macula
 - Full-thickness macular hole (FTMH) identified intraoperatively
- Video features the harvest of an autologous retinal graft and its transplantation into the FTMH during RD repair
 - Demonstrates the potential success of this technique even when grafting from detached retina
- Post-operatively, visual acuity improved from CF@3' → 20/400 with closed FTMH and attached retina



CYW: 23g PPV/IVK/ICG/MP/PFO/full-thickness retinal graft/EL/AFX/16% C3F8

Management options for FTMH

- Observation (if small, traumatic)
- Pneumatic vitreolysis
- Ocriplasmin
- PPV with internal limiting membrane (ILM) peeling
 - +/- adjuvant agents (e.g., growth factor-beta 2, thrombin, autologous blood components)
- ILM free/inverted flap
- Autologous transplantation of retinal free flap or lens capsule flap
- Arcuate/radial retinotomy
- Macular hole laser
- Macular hole detachment

Autologous retinal transplantation for FTMH

Autologous Neurosensory Retinal Free Flap for Closure of Refractory Myopic Macular Holes

Dilraj S. Grewal, MD¹; Tamer H. Mahmoud, MD, PhD²

[➤ Author Affiliations](#) | [Article Information](#)

JAMA Ophthalmol. 2016;134(2):229-230. doi:10.1001/jamaophth

Autologous Retinal Transplant for Refractory Macular Holes: Multicenter International Collaborative Study Group

Dilraj S. Grewal, MD,¹ Steve Charles, MD,² Barbara Parolini, MD,³ Kazuo Kaidonosono, MD,⁴
Tamer H. Mahmoud, MD, PhD²

Ophthalmology. 2019;126:1399-1408.

AUTOLOGOUS RETINAL TRANSPLANTATION AS A PRIMARY TREATMENT FOR LARGE CHRONIC MACULAR HOLES

SHEN TANAKA, MD,⁴ MAIKO INOUE, MD,⁴ TATSUYA INOUE, MD,⁴ TADASHI YAMAKAWA, MD,¹
EIKIHI UCHIO, MD,² DILRAJ S. GREWAL, MD,¹ TAMER H. MAHMOUD, MD, PhD,²
KAZUAKI KADONOSONO, MD⁴

RETINA 00:1-8, 2019

thank you!

contact: <christina.weng@bcm.edu>